

Madison-Morgan Conservancy

Newsletter
Winter, 2019-2020

Protecting Farms, Forests, and Front Porches for Future Generations

Board of Directors

President: WHITEY HUNT
Vice-President: BRUCE GILBERT
Treasurer: ART DOMBY
Secretary: SHANDON LAND

SAM BALL
ELIZABETH BRANCH
MARYANN DARTNELL
KYLE DAVIDSON
RACHEL KINSAUL
JILL MEELER
BROOKS PENNINGTON, IV
MICHAEL REDWINE
ELIZABETH ROCKHILL

Advisory Board

CAROLYN AINSLIE
BOB BEAUCHAMP
CHRIS BRANDON
EMILY BUCK
DEVON DARTNELL
JULIE DAVIE
LANE DENNARD
DAVID DODGE
DOUG EWING
NANCY GREENE
GEORGE HOLT
WES HOLT
WEYMAN HUNT
BRAD KELLY
KEN KOCHER
ZEKE LAMBERT
MIKE MCQUAIDE
BETSY MOREHOUSE
GAY MORRIS
GODFREY NEWTON
DAN RATHER
SANDY SANFORD
BECKY SHERWOOD
ROBERT TRULOCK
SUE ELLEN VERNER

Trustees Emeritus

MARY MCCAULEY
JANE SYMMES
WAYNE VASON

Executive Director

CHRISTINE WATTS

Public Relations Coordinator

THERESA DICKINSON

Program Coordinator

THERESA PIPPIN



Letter from the Immediate Past President

Happy 20th Anniversary!

2020 is a milestone for the Madison-Morgan Conservancy, and we could not be more proud of what this organization has become. From our early days Greenprinting, to our educational forums, to our Junior Conservancy and our most recent Endangered Properties Revolving Fund success, the journey has been exciting and has advanced conservation and preservation here on our little piece of earth. We know now, more than we did twenty years ago, just how important this work is for Morgan County – it's simply key to our quality of life and to retaining those special places that make this community unique.

As of December, Morgan County has 4,800 acres of permanently protected land. That means private landowners decided to give up property value (development rights) in order to protect what they know is important to Morgan County's future: clean water, wildlife habitat, tree canopy, productive farmland, historic places – conservation values that benefit every single person who lives in or visits Morgan County. Combine those acres with the 5,804 acres of land protected in Hard Labor Creek State Park, and it looks like Morgan County might be ahead of the game.

Recently, however, like in most metropolitan areas, real estate development is on the uptick here. Development pressure is now at a level the county has not seen for over a decade. Our challenge in the coming years will be to avoid the pitfalls many of our neighbors have fallen into: haphazard/unplanned buildout of rural roads, development eating up productive farmland, contamination of groundwater, degradation of historic town centers, unbearable traffic. Do you recognize

that transformation happening all around us? We do. And although Morgan County may have made great progress, there is still so much to do.

On a positive note, the Conservancy's work product this past year was impressive. On the next page, you will see a summary of last year's projects and accomplishments. We have a great staff and strong working board committees to thank for the progress we have seen, and if you would like to be involved in any of this work, we hope you will contact us. Our chance to plan our growth is here, and the more of us involved in that process, the better.

On a personal note, I would like to convey my gratitude for all of you who support the Conservancy. It has been an honor these last four years to serve as President. As I prepare to hand this baton back to our original president, Whitey Hunt, I am pleased

that the Conservancy's mission is strong, our work is on the mark, and our financials are stable.

I hope you will remember in the coming

years that member support is the key to that stability. If you're a member, THANK YOU for supporting Georgia's first and only countywide conservancy! If you're not a member, please renew or join during our 20th Anniversary year – we need the support of the entire Morgan County community for a robust year of protecting farms, forests, and front porches for future generations.

Sincerely,

Robert Trulock
Immediate Past President

2019 Year in Review

The Conservancy's mission is accomplished through education, technical assistance, and resource protection. See below a brief outline of last year's work.

Education

- Hosted four+ educational forums (goal is 3-4): Membership Supper, Conservation Easement Workshop, Working Farms Fund meeting with Farmers and the Conservation Fund, various Solarize events
- 3rd year of the Junior Conservancy – the program keeps getting better. Started and funded a JC scholarship of \$1,500
- Hosted an outing for the Boys & Girls Club at Hard Labor Creek State Park
- Partnered with the Cultural Center on the Clough Symposium
- Completed the Solarize project with Sustainable Newton
- Gave presentations to Land Trust Alliance Annual Conference (National), GA Trust for Historic Preservation Annual Conference (State), and to our local Kiwanis, Rotary, and Garden Clubs

Resource Protection

- Completed capitalizing the Endangered Properties Revolving Fund (raised over \$1mm for capital fund)
- Permanently protected and sold the FTM House (subject to a conservation easement and preservation agreement)
- 300 acres permanently protected through a conservation easement with Athens Land Trust
- Began in earnest on the Working Farms Fund in partnership with the Conservation Fund: participated in a feasibility study and created a database of landowners who are either transitioning out of ag or looking to expand their operations
- Reviewed ThumbsUp substation and transmission lines at Davis Crossroads and were successful in making one small change to the route, which should improve the aesthetics of the lines from the public right of way

Landowner and Local Government Technical Assistance

- Presented a Recycling Case Study to the Morgan County Manager (to be finalized in 2020)
- Assisted landowners in executing conservation easements (to be executed in 2020)

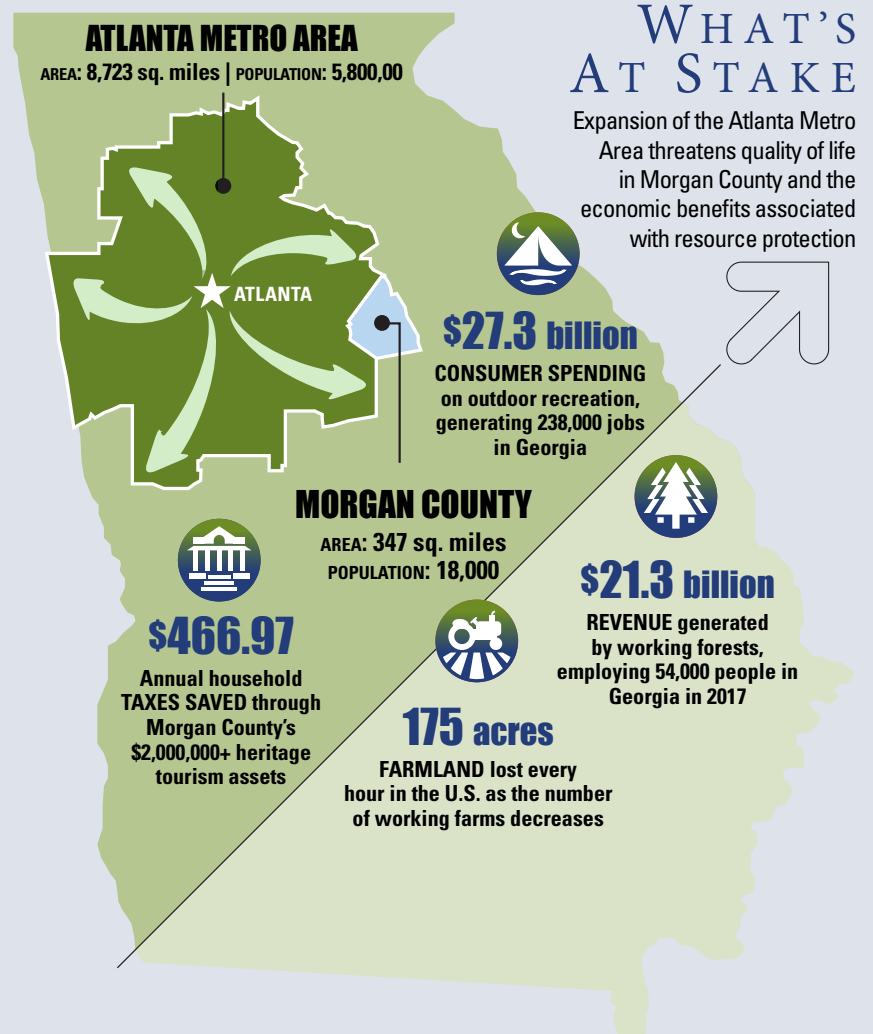
Grants

- 9 grants received for a total of \$32,641 for various programs
 - Accounted for 5% of total income and funded 13% of total expenses
- In addition to the 9 grants, we received final payments of the two large EPRF grants

Accolades

- Received the 2019 Governor's Award for the Arts and Humanities
- Nominated by Agricultural Commissioner Gary Black for the Atlantic Renewal Awards

The mission of the Madison-Morgan Conservancy is to provide public education on conservation matters and to protect and enhance the heritage and quality of life of the residents of Morgan County by preserving historic sites, greenspace, farmland, and timberland.



Resource Protection

FTM House Update

The most recent major step completed in the rehabilitation of the Foster-Thomason-Minnix House is that their rehabilitation plans have been reviewed and approved by the Madison Historic Preservation Commission.

The Minnixes have been working with a team of architects, interior restoration experts, and landscape architects to design the restoration of the historic house as well as a compatible rear addition. And there's great news from this team: they have tested cleaning methods and it turns out that the original frescoed ceiling and the grotto paper are salvageable. The Minnixes are determined to preserve as much of the historic material as possible, and, as you can imagine, the process of doing so is complex and time consuming.

To all of you Conservancy members and donors to the Endangered Properties Revolving Fund, thank you for making the restoration of this masterpiece possible. An especially big thanks to the Minnixes for their appreciation of this piece of Morgan County's history and their dedication to doing the job right.

Technical Assistance

Technical Assistance Available

Do you own a significant historic property? Do you own a working farm that has been in your family for over 100 years? Do you own land with high-quality conservation values? If so, your property may be eligible for listing on the National Register of Historic Places or in the Georgia Centennial Family Farm Program, or you might like to consider protecting your land's conservation value with a permanent conservation easement.

If you would like to know more, or explore these ideas, the Conservancy staff is here to help. Properties we have assisted with include: Nolan House (NR), Williams Family Farm (CFF), Broach Family Farm (CFF), Bryans Family Farm (CFF), Wayside Farm (CE), Goose Creek Farm (CE), Lambert Farm (CE), Sunny Side Plantation (CE), among others.

Contact us, and we will help you determine if your property qualifies, and if it does, we'll help you navigate the process.



Technical Assistance

Solarize Newton-Morgan Results

We are pleased to report that through the Solarize Newton-Morgan campaign, 16 residents added solar energy to their homes. The number of solar panels installed on these homes is equivalent to 85kW of power, which will avoid the release of 159,460 pounds of carbon dioxide each year. According to the EPA's Greenhouse Gas Equivalency Calculator, this is the same amount of carbon dioxide absorbed by 1,196 tree seedlings grown for 10 years, or 15.4 passenger vehicles driven for one year. Congratulations to all who participated in the program and are reducing the carbon footprint of our community!



Technical Assistance

Working Farms Fund

Are you transitioning out of farming? Or are you expanding your farming operation? If so, we want you to know about the Working Farms Fund – a program of the Conservancy designed to protect a farm belt around Atlanta and to keep working lands in working hands. Please contact us.

Membership

Movin' on Up?

NEW – Monthly Giving! It's all about cash flow. If you would prefer to give monthly, it's easy to do online. Just go to our website www.mmcGeorgia.org/membership and click the "Monthly Giving" button, and fill in the monthly amount you'd like to contribute.

- It may help you support the Conservancy at an even higher level
- Monthly membership income helps the Conservancy budget for the year

Daniel Morgan Society \$5,000+ | Monthly = \$417

Sustainer \$2,500+ | Monthly = \$209

Benefactor \$1,000+ | Monthly = \$84

Supporter \$500+ | Monthly = \$42

Donor \$250+ | Monthly = \$21

Meet our New Board Members



Elizabeth Branch, Elizabeth has lived in Morgan County since 1994 with her husband, Jim. They have two children, Alex and Kate; two dogs, Sam and Ella; and five horses. Elizabeth holds a Master of Science in Wildlife Biology with a certificate in Conservation Ecology and Sustainable Development from the University of Georgia. She is principle and owner of Natural Resource Consultants, LLC and Branch Farm & Timberland where she is a consulting ecologist and wildlife biologist. She enjoys working with land trusts and landowners in land conservation and land management. Elizabeth served on the Conservancy Board from 2008-2011 and previously served as President.



Art Domby, Art's family has owned and managed a timber tract in south Morgan County for over 60 years. After growing up in a small, rural town and later earning a degree from the University of Georgia with a focus on terrestrial ecology, Art worked as a non-game and endangered species biologist before attending law school. For the past 36 years his nationwide legal career with the Troutman Sanders law firm in Atlanta has concentrated on environmental and energy law, including assisting clients in developing environmental compliance programs, remediation of previously-contaminated property, and representing both individuals and companies in governmental investigation and enforcement matters. He and his spouse, Alice, were charter members of the Conservancy. Their current "projects" include restoration of an old field into pasture and a "demonstration stand" of long leaf pines.



Whitey Hunt, a native of Madison, Whitey served as the founding President for the Madison-Morgan Conservancy from 2000 – 2006. He is credited with the success of Morgan County's first Greenprint and it's being adopted by the County Commissioners in 2004. Whitey received a Bachelor of Science degree in animal science with a minor in agronomy from the University of Georgia. Innisfail Farm and his family's Hereford operation are his passions, and he was recently elected to the Board of the American Hereford Association. Whitey and his family own and operate Godfrey's Warehouse, established in the 1870s by his great-grandfather. He has also served on Madison's City Council, the Bank of Madison Board, the Green Morgan Forest Landowners Association, and was a regional vice-president of the Georgia Cattlemen's Association. Whitey and his wife Lyn attend the Madison Presbyterian Church and enjoy time with their children and grandchildren.



Remembering Neil Horstman

With heavy hearts, the Conservancy Board met in February without Neil Horstman. As we gathered on the porch and gave thanks for Neil's amazing life, the sunset burned in the sky, reminding us of our purpose here on earth.

The Afterglow, by Rose Koralewsky

The sun has set behind the hills, but limpid skies its radiance show;

The heavens bloom like one vast rose. It is the Afterglow.

Dear Lord, when my life's sun has set, and I am gone, as all must go;

Grant that I, too, may leave behind a lovely Afterglow.

Neil passed away Sunday, February 2nd, and we will miss him fiercely. After a career of managing historic preservation revolving funds, city planning, stewarding Mt. Vernon, and finally protecting some of our nation's most precious artifacts at the White House, Neil and his wife Anne moved to Madison. They lent their expertise to the Conservancy, helping build the Endangered Properties Revolving Fund, and gave us a tool that generations to come will use to protect their special places. Neil was a great gift to Morgan County.

We hold Anne and Neil's entire family in our hearts as they mourn the loss of this dear man. We are so thankful to have had some time with him here on this little piece of earth.

Our Vision: We envision a thriving Morgan County to be a healthy, beautiful place to live and work for current and future residents, where clean air and water, abundant wildlife, forestry, agriculture, and heritage tourism are vital and contribute to the regional economy. We aim to preserve the beautiful public vistas, agrarian heritage, rural crossroads, and small town atmosphere while attracting small to medium sized businesses to provide essential jobs and sustain our balanced tax digest. We envision an organization that makes an impact locally and uses its success to promote conservation and balanced growth throughout Georgia.

Educational Programming

Do Your Part to Help Troubling Times for Recycling

The City of Madison and Morgan County, along with many communities across the country, are currently facing difficulties with recycling. This is in part due to countries, such as China, no longer accepting recyclable materials from the developed world at the same rate that they had for decades. Foreign trash, shipped in mass, has been causing environmental and human health hazards in China, prompting the country to ban imports of mixed paper, plastic, and other scrap. This has dramatically altered the economics of recycling in the United States. While these are issues of a national and international scale, they are felt at the local level.

As individuals, we can do our part to help optimize the recycling stream right here in our community. Following proper recycling procedures and reducing contamination of recyclable materials can go a long way, reducing the amount of waste sent to the landfill and saving the local government valuable taxpayer dollars.



Madison and Morgan County residents have different recycling procedures, which can be found on their respective websites, but in general, residents can follow these helpful tips:

- 1. Recycling should be clean, loose, and dry.**
 - Empty and rinse all containers. Don't leave ketchup in that bottle!
 - If you must bag your recycling, use clear trash bags or the light blue recycling bags (you can find these at Ingles), otherwise it will automatically be sent to the landfill.
 - Plastic caps and lids are recyclable if attached to a bottle.
- 2. Plastic grocery bags must be recycled separately,** and Ingles, Lowes, and Walmart have easily accessible bins you can use. If these types of bags get into the single stream of recycling, they clog up the conveyor belts and gears that separate the other recycling, potentially shutting down the whole system.
- 3. Not all plastic is recyclable.** On the bottom of all plastic containers is a "chasing arrows" symbol with a number inside the arrows. The number represents the type of plastic. Which numbers get recycled is determined by who the local government contracts to do the recycling. **The City of Madison's recycler takes Plastics 1-7, while Morgan County's recycler only takes 1 & 2.**
- 4. Neither Madison nor Morgan County recycles glass.** Their recycling contractors stopped taking it.
- 5. Items that are NOT accepted for recycling:**
 - NO shredded paper (unless bagged in a clear bag)
 - NO Styrofoam
 - NO paper plates or cups
 - NO plastic knives, forks, spoons
 - NO napkins or paper towels
 - NO glassware (plates, mugs, cups, windows)

Help us clean up our recycling so more of it actually gets recycled. Spread the word - tell your neighbors and friends. And remember the Shred Event on Saturday, April 25, 9-11am to recycle other items like paint, batteries, insecticides, electronics, etc.

Educational Programming

NEW Junior Conservancy College Scholarship and More Big Dreams!

Thanks to an anonymous donor, our dream of giving a college scholarship is coming true! New this school year, Junior Conservancy seniors are eligible to apply for a \$1,500 scholarship. Our dream will support someone else's dream of going to college, and we are thrilled.

Our next big dream for the Junior Conservancy is to incorporate an overnight trip to the Len Foote Hike Inn, where a five-mile hike leads to a backcountry inn. The conservation education at the Hike Inn is unparalleled – from the hikes through nature, to weighing food waste after dinner, to the composting worm beds, this place has it all. We need your help realizing this dream, too, of course, so if you're interested in funding this educational (and fun) experience for next year, please contact us.

While we're dreaming big, we're recruiting for next year's JC Board. If you know a high school student who resides in Morgan County and would be interested in participating, please send them our way. Applications are due March 20, and interviews are scheduled for April 13-24. All the info is on our website, too.

This year's JC Board spent the first half of their school year learning

about the field of historic preservation during monthly JC Board meetings. They also cleaned historic monuments in the cemetery, attended Madison Commission meetings, and toured historic neighborhoods and buildings. During the second half of the school year, they are preparing audio/visual presentations highlighting nine resources listed on Morgan County's Greenprint. Want to see their project? They will be presenting at the Annual Membership Supper on Friday, March 20th, and we invite you to join us.

The Junior Conservancy would not be possible without our wonderful volunteer committee (Emily Buck, Maryann Dartnell, and Rachel Kinsaul) or generous grants from Georgia Power, Sarah Baldwin Harris and J.D. Harris Foundation, Morgan Stanley Foundation, and an anonymous donor. Thank you for your support!



Conservancy Members

JANUARY 2019 - FEBRUARY 2020

THE 1772 FOUNDATION	HILDA & JAMES CHILTON	BARBARA & GREG HARDESTY	** LADY KUPERBERG
SUMMER & LEE ABNEY	BRENDA & JEFF CLOTFELTER	* LCDR ALBERT HARPER & FAMILY	** WILL KUPERBERG
DIANE ALLMOND	MARY KAY & FLYNN CLYBURN	*JUNE HARRELL	SUSAN & BILL KURTZ
AMICI FOOD GROUP, LLC	COMMUNITY FOUNDATION OF	MARTHA HARRELL	* CHRIS LAMBERT
ANONYMOUS	GREATER ATLANTA	PATSY HARRIS	*ZEKE LAMBERT
KAY ARGROVES	CONRAD'S FAMILY FOUNDATION	SARAH BALDWIN HARRIS & J.D.	* SHANDON & DAVID LAND
MR. & MRS. JACK ARMISTEAD	DR. & MRS. JOSEPH M. CRAVER	HARRIS FOUNDATION, INC.	*EMILY & DON LANE
KATHRYN & DARREN ASH	MARTHA & BLAIR CURTIS	*PAUL D. HENSLER	MR. & MRS. ROBERT E. LANIER
HUBERT ATKINS	MARYANN & DEVON DARTNELL	BONNIE & STRATTON HICKY	NANCY & GEORGE LAUNIUS
MR. CARL BACHMANN	MIRYN & KYLE DAVIDSON	MEG & RAY HIGGINBOTHAM	*CATHY & BRIAN LEHMAN
*KATHY BAKANE	JULIE DAVIE	*MARIAN HILL	PATRICIA & FRANK LAYSON
CANDACE CARLSON & KEVIN BAKER	DIANE DAVIES	SALLY & ARNOLD HOGE	DR. KEN LEWIS
SUE BALDWIN	DAVIS ESTES HOMEPLACE LLLP	KEBBY & REG HOLDEN	BEVERLY LIBBY
**AUDREY BALICKI	KEITH DAVIS, ALLIANCE	RENA & GEORGE HOLT	KENT LINGERFELT
MARY & CHAD BALICKI	CORRUGATED & DISPLAYS, LLC	ANNE HORSTMAN	HARRIS LITTLE
SARAH & SAM BALL	KAYE & STAN DEJARNETT	MELISSA HOWE	LONGVIEW WEALTH MANAGEMENT
BANK OF MADISON, INC.	CHERYL DELK	HEATHER & JAY HOWARD	PENNY & BOB LYLE
* JANET & BOB BEAUCHAMP	MR. & MRS. LANE DENNARD	STEPHANIE HUDAK	ADAM MACDANIEL
*ROSEMARY L. & DON W. BECKER	MARY ELLEN & JAMES DENNISON	BEN HUDSON	ROBERT J. MACKENZIE
JERRY BEERS	** LIPI DESAI	LINDA & STEVE HUGGINS	S. MICHELE MACKENZIE
HANK BELL	MARY & JIM DEVANE	BONNIE & LYNN HULL	SHELLEY MACMILLAN
LEONA & TOM BENKOSKI	THERESA & WARD DICKINSON	ANNITA & CHANDLER HUNT	MADISON-MORGAN CHAMBER OF
MARY BENNETT	* FLOSSIE & DAVID DODGE	*LYN & WHITEY HUNT	COMMERCE
DAVID BENTLEY	PETER DODGE	DEBORAH & JON HUNTER	MAGNOLIA GARDEN CLUB
BERRY'S TREE FARM	* ALICE KOHN & ARTHUR H. DOMBY	*MARY & JOHN HUNTZ	MAIN STREET VET
** SUSAN BISHOP	PAT WALKER & JEANNE DUFORT	ANNE C. SYMMES & STEPHEN IVES	BUCKY MALCOM
*MR. & MRS. IRA BLOCK	BETH DUVAL	JACK'S CREEK FARM	JAN & BILL MANOS
*JANE C. BOSTWICK	EDWARD JONES	KIM JACKSON	MS. ANNA MARETT
TRICIA & JOHN BOSTWICK	ANDREA EIDSON	MARY ANN & RICHARD JACOB	MELISSA & BRIAN MARTIN
BARBARA AND GLEN BOTTOMLEY	TERRY EMBRY	* JULIE JENKINS	TERRY REEVES-MARTIN & DOUG
RICK BOULIS	LEE ANN & BRIAN EMERSON	KAREN & FELTON JENKINS	MARTIN
BOXWOOD GARDEN CLUB	GLENN T. ESKEW	KELLY JESEL	** JAMES MARTIN
*RUTH & MIKE BRACEWELL	MR. & MRS. MORT EWING	JIM BOYD AND ASSOCIATES	STEPHANIE & MICHAEL MARTIN
MR. & MRS. JAMES BRANCH	DENNY & DOUG EWING	*MR. & MRS. HANK JOHNS	KAREN & GENE MASSEY
* LISA & CHRISTOPHER	HOLLY & KELLY FARMER	TRACI & STEWART JOHNS	* MARY & BOB MCCAULEY
BRANDON	ELIZABETH & ROBERT FEARS	CRYSTAL & ELLIS JOHNSON	TERRY TATUM & JERRY
JUDY & TOMMY BREEDLOVE	EMILY & TOM FOLLOWILL	*MARGARET & KEVIN JOHNSON	MCCOLLUM
MR. & MRS. WILSON BROACH	PENNY FOOTE	SYLVIA JOHNSON	SUSAN & TONY MCCULLAR
CAROLBETH BROOMFIELD	DR. VIRGINIA PAYNE & MR. CLARENCE	*DRS. BABS & HIRAM JOHNSTON	CAROL & RICKY MCGINNIS
RACHEL & ED BROYLES	FOREMAN	CAROL & JIM JONES	NANCY CLAIR LAIRD & STEVE
BRYANS FAMILY FOUNDATION	MIRIAM FOSTER	KAY H. & BURKE C. JONES	MCINANEY
**DAISY-JANE BUCK	KELLY & REESE FREYER	KRISTIN & BRYAN JONES	KELLY & CHAD MCLEOD
MR. & MRS. DAVID BUCK	ERIN & JOHN GARRETT	JUDI PERAZZO & ERIC JOYCE	WENDELL MCNEAL
ANNIE HUNT & J. WOOD BURRISS	** IAN GARRETT	** CHRISTIAN KEENER	*STACY & MICHAEL MCQUAIDE
NANCY A. BUSH	KAREN & MIKE GARRETT	ROBYN AND STEVE KEENER	BARRY MCWHIRTER, MCWHIRTER
ROSEMARY BUTTERMORE	GEORGIA POWER FOUNDATION	STEPHANIE & MICHAEL KEENER	INVESTMENTS, LLC.
ANDREA & TERRY BYER	MR. & MRS. BRUCE GILBERT	PAM & KEITH KELLY	SYDNEY & GRAY MCWHIRTER
THE CABOOSE	MANDY & CHANIN GILL	SHERRI & TERRY KENNEDY	JILL & KEVIN MEELER
CAMP TWIN LAKES	DENA & BRAD GOOD	BILL KILLMER	*NANCY & JACK MILES
SCOTT CAMPBELL	LISA & STEVE GREENBERG	AL KIMSEY - MADISON RENTALS	MR. & MRS. JEFF MILLER
CHERYL & H.D. CANNINGTON	NANCY GREENE	BILL KILLMER	CAROLYN & RON MILTON
KATHRYN & JOE CARDWELL	SANDRA "SANDY" GREENE	RACHEL & JASON KINSAUL	ELIZABETH & DAVID MINNIX
AMY & SCOTT CARTER	TAMI HALLORAN	MONICA & KEN KOCHER	EMY & TOMMY MITCHAM
SUE & JAMES E. CARTER	BETH & CHARLES HANEY	DAN BELMAN & RANDY KORANDO	VICTORIA NEWTON MOONEY
NATALIE & GEORGE CHASE;	LOUISE & ED HANNAH	SANDRA STEWART KRUGER	JOYCE & DUTTON MOREHOUSE
TIMBER CHASE FARM, LLC	SOLVEIG & DONALD HARDEN	NANCY & KEN KUPERBERG	BETSY & SANDY MOREHOUSE

* Charter Members

Watershed Donors (bolded)

** Junior Conservancy Members

New Members (green)

Madison-Morgan Conservancy | PO Box 752 | Madison, GA | 30650 | 706-818-8046 | www.mmcGeorgia.org | info@mmcGeorgia.org

Conservancy Members continued...

MORGAN COUNTY EXTENSION
MORGAN STANLEY FOUNDATION
 SUZANNE & LEIGH MORGAN
 MR. & MRS. ROY MORRIS
 CHERAL & JOSEPH MROZ
 DONNA & DENNIS MYERS
 *REBECCA & GODFREY NEWTON
 THE NOTTE LAW FIRM
 ** VALERIA NOTTE
 MR. & MRS. LEE NUNN
 PAGETT & WHETZEL FAMILY &
 COSMETIC DENTISTRY
 BRENDA & TOMMY PARRISH
 BROOKS "SONNY" PENNINGTON, III
 CECILY & BROOKS PENNINGTON, IV
 CHARLOTTE & KEITH PHARR
DIANE & WILL PHARR
 MELISSA & JASON PICHE
 THERESA & SCOTT PIPPIN
 KATHY & CHUCK PLUMLEY
 CHERRY & RICK PORTER
 VAN PRICE
 BETH & TIM PRIDGEN
 ALLISON & AUSTIN PUGMIRE
 ** MADDOX PUGMIRE
 MS. BETSY QUILLIN
 MARI & WALT RABERN
BLAIR & TRIPP RACKLEY
 *DAN RATHER
 DANIELLE & DANA RECTOR
MR. JEFFREY HAGY &
MR. MICHAEL REDWINE
 DENEICE & BRAD RICE
 DR. ROSE ANN RIGBY-WEAVER, MD
 KATE & J.P. ROBERTS
 DRS. TERRY BLUM & PAUL ROMAN
 HELEENA & MICHAEL ROUSH
 *MR. & MRS. BILL ROSS
 NAN ROWAN
 *JANE & EVERETT ROYAL
 BARBARA & FRANCIS RUSHING
 MICHELLE & STEPHEN RUTLEDGE
 DR. STEPHEN & JAN SAMPSON
 ELLEN SANDERS
 JAMIE MOORE SARKIN
 CATHERINE J. SASNETT
 RITA & STEVE SCHAEFER
 KATHIE & DICK SCHMIDT
 JODIE & DICK SCHMIDT
 EDITH S. SHEDD
 MR. & MRS. TOM SHERWOOD
 HOLLY SHREINER
 ELIZABETH ROCKHILL & SIMEON
 SERGIADIS
 GAIL & JOHN SINGLETON
 DAVE SKILLEN
 LAURA & BOBBY SMITH
 CHRISTINE & MATTHEW SMITH

CINDI FETCH & PRESTON SNYDER
 CINDY & RONNIE STAPP
 *AMELIA STEELE
 *ESTHER & JIM STOKES
 ELLEN & JIM STRICKLAND
 *JANE SYMMES
 MRS. GEORGEANA TAMPLIN
 DEBBIE & WAYNE TAMPLIN
 JOHANNA & BRYAN TATE
 JOAN & LARRY TAYLOR
 LINDA & DAN THOMAN
 COURTNEY THOMAS
 *MRS. JOYCE THOMAS
 THREE SEASONS GARDEN CLUB
 DEBBIE & DEAN TILLERY, NUART
 SCOTT REED & DAN TOKOS
 MARY & MIKE TORINO
 MRS. LYNN WALKER TREADWELL
 *ANNE & ROBERT TRULOCK
 SALLY & GRADY TUELL
ROBERT M. & LILIAS BALDWIN
TURNELL FOUNDATION
 *FIN VASON
 *KATIE VASON
 *MRS. LEE HARPER & MR. WAYNE
VASON
 CHERIE VAUGHAN
 NANCY VAUGHAN
 *SUE ELLEN & ALAN S. VERNER
 BETSY & BILL VERNER
 JULIE & DAN VICE
 ANSLEY VINSON
 PHILIPP VON HANSTEIN
 LELA & KYLE WARD
 ELLEN WARREN
WATSON-BROWN FOUNDATION
 *CHRISTINE & DAVID WATTS
 *KATIE & SCOTT WEBER
 SUSAN RODRIGUEZ WELCH
 CHARLES WELDON
 GEORGE H. WEST
 TED WESTLAKE
 CATHY & STEVE WHITCOMB
 *CLARENCE & KATHY WHITESIDE
 MR. & MRS. PETER WIBELL
 SALLY WICKLAND
 CAROL & EVERETT WILLIAMS
 ** FRITZ WILLIAMS
 JAMIE & JAMES WILLIAMS
 MARJEAN MEADOWS & JIM WINKLER
 MR. & MRS. BLANTON WINSHIP
 CLARE WOLFE
 LINDA & KARL WOODWORTH
 CHRISTIE & CHARLES WRIGHT
 CONNIE & WILLIAM ZACHARY

Join or Renew Your Membership Today!

Madison-Morgan Conservancy
 P.O. Box 752, Madison, GA 30650
 706-818-8046 | www.mmcGeorgia.org | info@mmcGeorgia.org

Annual Membership Form

Support the Conservancy's mission with your annual membership:

- | | |
|---|--|
| <input type="checkbox"/> Daniel Morgan Society - \$5,000 +
(Watershed Donor Level) | <input type="checkbox"/> Supporter - \$500 |
| <input type="checkbox"/> Sustainer - \$2,500 +
(Watershed Donor Level) | <input type="checkbox"/> Donor - \$250 |
| <input type="checkbox"/> Benefactor - \$1,000 +
(Watershed Donor Level) | <input type="checkbox"/> Preservationist - \$100 |
| | <input type="checkbox"/> Conservationist - \$50 |
| | <input type="checkbox"/> Naturalist - \$25 |
| <input type="checkbox"/> I would like to contribute an additional: \$ _____
to the Endangered Properties Revolving Fund. | |
| <input type="checkbox"/> My Company has a matching gift program. Please send me information about matching gifts. | |
| <input type="checkbox"/> Please send me information about including the Madison-Morgan Conservancy in my will. | |
| <input type="checkbox"/> I would like to volunteer. | |

Name(s) as it should appear on the Membership list:

Address: _____

City: _____ State: _____ Zip: _____

Phone 1: _____ Phone 2: _____

Email 1: _____

Email 2: _____

Membership

From the Membership Chair

As we look back over the 20 years of the Madison-Morgan Conservancy, the impact of this organization can be felt across the county. We have worked to help local farmers via the Working Farms Fund, capitalized the second largest revolving fund in Georgia saving the Foster-Thomason-Miller House, and helped protect more than 4,800 acres of land. The impact will be felt for generations to come.

The heart and soul of the organization is our membership. Members shape the vision, advocate for our mission, support the budget, and represent the organization in the county, across the state, and beyond. A strong membership also confirms for foundations and other funding sources that our base of support is strong, and that their funding will be put to good use in our community.

To support the growth of the Madison-Morgan Conservancy, The Board of Directors has set a goal of 550 members by the October 2020 and 650 members by the end of 2021. You can help us reach our goal by maintaining your membership and referring a friend or neighbor. Please know that every voice helps and that every member counts.

On behalf of all of us here, thank you for supporting this local Conservancy.

- Kyle Davidson, Membership Committee Chair



Madison-Morgan Conservancy
P.O. Box 752
Madison, GA 30650

(706) 818-8046
www.mmcGeorgia.org



Return Service Requested

Need to Renew? Check Your Mailing Label.

The date printed above your name on the mailing label is the last date on which you paid your annual membership dues. Please renew annually to support the Conservancy's work and to expand our programming.

Winter, 2019-2020

This newsletter is printed on 100% post-consumer waste recycled paper.

Upcoming Events

MARCH 20

Junior Conservancy Applications Due

Applications for the Junior Conservancy 2020-2021 school year are due Friday, March 20. All high school students who live in Morgan County are invited to apply. Please visit our website for more information and to access the application.

MARCH 20

Annual Membership Supper at Malcom's Crossroads

Join us Friday, March 20, 2020, 6:00 p.m. for the Annual Membership Supper at Dan Rather's barn at Malcom's Crossroads. This year the Junior Conservancy Board will present "These Important Places."

APRIL 2

A Workshop for Realtors

Need to know more about CUVA, conservation easements, or historic preservation tax credits? Join us Thursday, April 2, 2020 at Farmview Market, Madison, GA, 10:00 a.m. - 2:00 p.m. for Protect and Prosper: A Workshop for Land Use Professionals, hosted by the Conservancy and the Georgia Trust for Historic Preservation. Learn how you can promote historic preservation, farmland preservation, and land conservation in your real estate business. Continuing education credits available for real estate professionals. For more information, please contact Christine Watts at cmccauley@mmcGeorgia.org.

MAY 2

Derby Day

Join us Saturday, May 2, 2020 for Derby Day, the Conservancy's only fundraiser of the year! We'll be getting' down and derby again at the Madison-Morgan Cultural Center Hall. Sponsorships are now available, and any remaining tickets will go on sale March 30, 2020. Enjoy live viewing of the Kentucky Derby, a delicious supper by Lee Epting, live auction, and, NEW THIS YEAR, a band and dancing the night away!



SEPTEMBER 24

Conservation Easement Workshop

Save the date for the Annual Conservation Easement Workshop on Thursday, September 24, 2020 at Burge Plantation, Mansfield, GA, 8:00 a.m. - 5:00 p.m. Continuing education credit for lawyers, appraisers, realtors, and CPAs.

OCTOBER 24

The Greenprint Ramble

Join us on Saturday, October 24, 2020 for the 20th Anniversary Greenprint Ramble. This year we will take you on a narrated tour of the Apalachee area followed by a farmers' feast made of hyper-local ingredients. Details will follow, but if you'd like more information or would like to support this event by sponsoring, please contact us.